



KYRGYZ REPUBLIC
COMMUNITY DEVELOPMENT AND INVESTMENT AGENCY
(ARIS)

THIRD VILLAGE INVESTMENT PROJECT
(VIP3)

MICRO PROJECT: «INSTALLATION OF HEATING SYSYTEM
IN KINDERGARTEN, 50 PLACES. KUM-DEBE VILLAGE,
KOCHKOR RAYON»

KOCHKOR RAYON, NARYN OBLAST

ENVIRONMENTAL MANAGEMENT PLAN CHECKLIST

CONTENTS

Abbreviations	2
PART 1: PROJECT AND OBJECT GENERAL BACKGROUND	3
PART 2: EVALUATION OF ECOLOGICAL AND SOCIAL IMPACTS	5
PART 3: MITIGATION PLAN OF NEGATIVE IMPACTS	6
PART 4: MONITORING PLAN	8
PART 5: MONITORING CHECKLIST OF CONSTRUCTION SITE	9
PART 6: FEEDBACK SYSTEM AND COMPLAINTS REVIEW MECHANISM	11
PART 7: SOCIAL SCREENING CHECKLIST OF SOCIAL MONITORING AND CONSEQUENCES ASSESSMENT	12
Annex 1. CENTER DRAFT	14
Annex 2. IMAGES OF CONSTRUCTION SITE	15
Annex 3. KINDERGARTEN GENERAL DRAFT	16
Annex 4. HEATING DRAFT	18
Annex 5. CERTIFICATE OF COMPLIANCE FOR HEATING BOILER	20
Annex 4. Construction site Banner sample	21

ABBREVIATIONS

AC	Ayil county
ARIS	Community Development and Investment Agency
ACM	Asbestos-Containing Materials
WB	World Bank
SAEPF KR	State Agency on Environment Protection and Forestry
SETI	State Environmental and Technical Inspection under the Government
SC	Small Cattle
EMP	Environment management plan
SEC	Sanitation and Epidemic Control
TS	Technical conditions
APC	Architectural-planning conditions

PART 1: PROJECT AND OBJECT GENERAL BACKGROUND

ADMINISTRATIVE AND ORGANIZATIONAL CONDITIONS				
Organizational conditions (Personal and contact information)	Project Management ARIS VIP-3 Coordinator M.E. Bayaliev Tel: 0312 30-01-50-217		Local party and/or Beneficiary Village Administration Head Asanbaev Mayrambek 0704291066	
Implementation mechanisms (Personal and contact information)	Environmental Safety Monitoring T. Kandzhebaev Safeguards Specialist 0555667466	Local contractor works supervision A. Nurdinov Oblast Engineer ARIS 0559123526	Supervision of local inspecting authorities Engineer of Technical Supervision SETI, Naryn oblast. Tel: 0701901301	Contractor To be selected by tender
SITE WORKS DESCRIPTION				
Facility	Installation of heating system in the Kindergarten for 50 places (total square 5857 square meters, site is a municipal property, total square of heating building 460,8 m2, after completion of construction works, object will go to balance of AO, and further maintenance and sustainable functioning is fully assigned to AO). Google Earth coordinates of the construction site.			Site location on the page. Site Image, annex on the page 14.
Land owner	Kum-Debe AO, based on State act B #025149, 31 November 2016.			
Work Description	<p>In the frames of micro-project, planned to install heating system in the building of the kindergarten. The following works are planned:</p> <ul style="list-style-type: none"> -installation of cast iron radiators – 268 sections.; -piping of the heating steel water supply, non galvanized pipe lines – by 169 m.; -hydraulic test of the water supply pipes – 169 m.; -installation of the shower faucets – 26 pieces; -ball faucet DN20MM – 4 sets; -trigger cock faucet – 2 pieces; -water supply pipes isolation -25 m3; -covering of the pipelines isolation by elastic covers – 0,628 m2; -painting of the primered metal surfaces – 87,4 m2; -oil paint of the metal grills surfaces - 87,4; -installation of the round and rectangle extension tanks, with capacity – up to 0,1 m3 – 1 piece. <p>Energy saving Installation of the heating boiler on solid fuel is planned, using of AO funds. Energy efficient boiler of long lasting burning, capacity from 10 to 4000 кВт. Pressure in a system – not more than 0,4 Mpa. Water heating up to 95 degrees by Celcius. Presence of Certificate of Compliance. (See annex 5).</p>			

	<p>GOST 20548-87. Water heating boilers, with heat productivity – to 100 кВт. Standard is acceptable for heating boilers (further - boilers) nominal heat productivity – to 100 кВт, with working pressure - to 0,4* MPa, and maximum water temperature of the boiler - to 95 °C, used for heating supply of the individual habitat houses and buildings of communal-household purposes, equipped by the systems of water heating with essential or forced circulation of hot water supply.</p> <p>Boiler location on the territory of the kindergarten, will be installed on the east side, on the edge of allotted territory. See page 15.</p> <p>Planned to install an electric heating boiler by AO themselves. Warranty Letter from AO will be forwarded to ARIS, about obligation to replace the solid fuel boiler to electric one.</p>
Description of geographical, physical, biological, geological, hydrographical and social-economic conditions	<p>Location of the site: Kum-Debe AO borders with Semiz-Bel and Cholpon AO. Distance from the oblast center – 140 км. The height above the sea level - 2050 м, distance to the nearest rayon center - 35 км.</p> <p>Absence of nature protected objects on the site and nearby (nature reserves, cultural monuments, historical and architectural sights).</p> <p><i>Relief of the site:</i> plain. No mud floats, mud slides previously occurred, no signs of soil erosion.</p> <p><i>Ground surface:</i> ground. Project works will not harm the soil and will not affect on the landscape.</p> <p><i>Vegetation cover:</i> grass cover on the site, no green plantings near.</p> <p><i>Water supply:</i> Central water supply is 10 м away from the site. Water quality controlled by the rayon SEC plannings.</p> <p><i>Sewerage:</i> Central sewerage is absent.</p> <p><i>Electric supply:</i> regular with rare outage due to emergency. Due to reconstruction works period could be temporary power outage.</p> <p><i>Presence of asbestos containing materials (ACM):</i> Absent.</p> <p>No historical objects, cultural monuments on the site.</p> <p><i>Resettlement questions:</i> Using the WB policy «Involuntary resettlement» not required</p>
Location and distance from material supply point, inert materials and water resources	<p>From nearest construction market, located at the rayon center.</p> <p>From the water supply network</p>
ENVIRONMENTAL LEGISLATION	
National legislation and permits that apply to project activities	<ul style="list-style-type: none"> - The Law of the Kyrgyz Republic “On Environmental Protection” (2016) - The Law of the Kyrgyz Republic “On Environmental Expertise”(2015) - The Law of the Kyrgyz Republic “The General Technical Regulation on Providing Ecological Safety in the Kyrgyz Republic” (2012) - Law of the Kyrgyz Republic “On Industrial and Consumer Waste (2001) <p><u>The Contractor is responsible for:</u></p> <ul style="list-style-type: none"> - <u>Obtaining permission for construction work issued by the District Department for Architecture and Urban Development</u> - <u>concluding an agreement with AA for the removal of the construction waste to the village landfill</u>
SOCIAL CONSULTATIONS	
Indicate, where and when the meetings of social consultations were held	<p>Consultations with society were held during the election of objects to qualifying round, for participation in the second qualifying cycle of VIP-3 and during the preparation of the checklist. 19.06.2019.</p>

DEVELOPMENT OF INSTITUTIONAL POTENTIAL	
Ожидается ли развитие потенциала?	<input type="checkbox"/> No or <input checked="" type="checkbox"/> Yes. Studies were conducted (trainings) by the topics: «Village needs joint assessment», «Development strategy of the local territories», «Design of the project proposals», «Community development potential: legislative basis of the Local Governances».

ЧАСТЬ 2: ECOLOGICAL AND SOCIAL IMPACTS ASSESSMENT

	Work Activities and Examples of Possible Impacts	Status – If answer is “YES”	Additional references
Can the construction work directly or indirectly cause any of the following problems and / or impacts?	1. Reconstruction/Rehabilitation <ul style="list-style-type: none"> Traffic load Increased levels of noise, dust, pollution of water and soil during removal and/or rehabilitation Construction and consumer waste 	<input type="checkbox"/> Yes <input checked="" type="checkbox"/> No	See paragraph A and B below
	2. New Construction <ul style="list-style-type: none"> Consequences of earthmoving and soil erosion Disposal of wastewater into local streams and the subsurface horizons Traffic Load Increased levels of noise, dust, pollution of water and soil during construction Construction waste 	<input checked="" type="checkbox"/> Yes <input type="checkbox"/> No	See paragraph A and B below
	3. Occupational Safety and Health	<input checked="" type="checkbox"/> Yes <input type="checkbox"/> No	See paragraph A
	4. Traffic and pedestrian safety <ul style="list-style-type: none"> The site is located in residential area 	<input type="checkbox"/> Yes <input checked="" type="checkbox"/> No	See paragraph D
	5. Improving building design for the efficient water and energy use	<input type="checkbox"/> Yes <input checked="" type="checkbox"/> No	See paragraph F и H
	6. Sewage water treatment <ul style="list-style-type: none"> Sewage system and /or direct disposal of wastewater into local streams 	<input type="checkbox"/> Yes <input checked="" type="checkbox"/> No	See paragraph L
	7. Historic buildings and areas <ul style="list-style-type: none"> Destruction of historical and cultural heritage 	<input type="checkbox"/> Yes <input checked="" type="checkbox"/> No	See paragraph K
	8. Land acquisition for project activities ¹ <ul style="list-style-type: none"> Private property use Temporary relocation of population due to construction work 	<input type="checkbox"/> Yes <input checked="" type="checkbox"/> No	See paragraph M

¹ Land acquisition (planning of land use) includes relocation of the local population; changes in the livelihoods of the local population; invasion of privately owned territories. This applies to land that is acquired or transferred for project activities, and such acquisitions or transfers are related to the impact on people who officially and /or informally live on this land and / or are engaged in some kind of business on it (for example, small shops)

	Work Activities and Examples of Possible Impacts	Status – If answer is “YES”	Additional references
	<ul style="list-style-type: none"> Involuntary resettlement measures Impacts on local incomes and businesses 		
	9. Hazardous or toxic materials ² <ul style="list-style-type: none"> Hazardous and/or toxic construction waste management 	[] Yes [X] No	See paragraph C
	10. Impact on forests and/or other protected areas <ul style="list-style-type: none"> Concern for the local natural habitat of protected animals 	[] Yes [X] No	See paragraph I
	11. Medical waste management <ul style="list-style-type: none"> Disposal of medical waste on or off site 	[] Yes [X] No	See paragraph J

6 Toxic and harmful wastes include, but not limited by asbestos, toxic paints, poisonous solvents, removing of paints on the basis of tetra ethyl lead etc.

PART 3: MITIGATION PLAN

Activity	Parameters	Mitigation Checklist
A. General Working Conditions	Informing, instruction and labor safety	(a) Local inspections supervising construction works and environmental safety. Local residents are duly notified of upcoming project activities (b) The local community is duly notified of the work with the help of signs in public places (including the work site). (c) Placing an information banner on the work site (d) Adequate fences have been installed around the construction site to guarantee the safety of the public and children. (e) Permits required by law (use of natural resources, landfill, etc.) for construction work have been obtained (f) All works should be carried out in the safest and most disciplined manner and be organized in such a way as to minimize the negative impacts of the work process on local residents and the natural environment (g) Adequate direction and information signs should be placed on the site to inform workers of the basic rules and standards for the work that must be performed (h) If a Contractor involves non-local workers in repair and construction works, he will be required to provide them with the necessary living conditions – a place to sleep and eat (including food) and a bathroom. (i) First-aid kits at the work site (j) Personal protective equipment must meet safety standards (with mandatory constant wearing of helmets, protective masks, where necessary, safety goggles, belts and shoes). (k) Compliance with KR Health and Safety Regulations of January 12, 2018 “Construction Safety Requirements”. (l) Safety and health log at the work site (m) List of emergency services and their closest location, telephones

² Work with toxic and/or hazardous materials includes, in particular, work with asbestos, toxic paints, work on removing paints containing lead, etc.

Activity	Parameters	Mitigation Checklist
B. General Construction Works	Air Quality	(a) Construction waste must be collected in a specially designated place with subsequent removal to the landfill (b) It is required to keep the construction site and the surrounding area clean (c) It is forbidden to burn construction waste and structures in the open fire at the construction site (d) Excessive accumulation of idle/inoperative construction equipment at the site is not allowed (e) An idle running of the construction machinery engines is not allowed (f) It is necessary to reduce the level of building or transportation dust to minimum values by watering construction access roads (g) It is necessary to reduce amount of soil when loading in cars (h) Safe storage and transportation of flammable and hazardous substances (gas cylinders, bituminous materials, solvents, paints, varnishes, glass-and slag wool), etc. (i) Equipping vehicles transporting bulk materials with removable tents (j) Use of acrylic paints with Certificate of quality in child care institutions
	Soil	(a) Refueling cars strictly at stationary posts b) Soil contamination with fuel is not allowed. c) Removing the fertile soil for use in remediation work d) Providing drainage measures to prevent soil flooding at high groundwater levels e) The parking place for construction machinery should be covered with crushed stone
	Noise	(a) Building noise is allowed only at specific time: 8am -18pm (b) During construction, the engines of generators, air compressors and other machines and mechanical devices should be properly covered, and the machines should be located as far as possible from residential areas
	Water quality	(a) Fuel contamination of the irrigation system is not allowed
	Waste Management	(a) Construction waste must be collected in a specially designated place with subsequent removal to the landfill. (b) Whenever possible, the contractor shall ensure the reuse of valid and resistant materials (with the exception of ACM) (c) Household and food waste should be separated from construction waste and placed in special containers with its subsequent disposal

PART 4: MONITORING PLAN

Implementation Stage	What Parameter is subject to monitoring?	Where Parameter is subject to monitoring?	How Parameter is subject to monitoring?	When? (Frequency)	Why? (Is there a need for parameter control?)	Monitoring Cost (if it is not included in the project budget)	Who? (is responsible for monitoring?)
Design	Detail design and estimates (DDE), written in details in paragraph E above. Not required	Reports and finished DDE, prepared by the engineering company.	Review of reports and finished DDE, prepared by the engineering company.	At the stage of presentation by the engineering company of DDE before the expert evaluation	To ensure including all necessary requirements in the tender documentation	Project funds	ARIS
Construction	<ol style="list-style-type: none"> 1. Site fencing during construction 2. Availability of information stands with contact details for public complaints 3. Availability of personal protective equipment 4. Prohibition to use ACM. 5. Preventing of soil erosion and sewerage drains to the watercourses nearby. 6. Proper waste management 7. An agreement between the Contractor and the Village Administration for the removal of construction waste to a local landfill. 8. Dust prevention. 9. Time management (8am – 6am). 	Construction site.	<p>Inspection visits to construction sites</p> <p>Public complaints</p>	<p>During construction and until the issuance of the Certificate of completion</p> <p>In case of public complaints</p>	To ensure compliance with all necessary environmental requirements	Must be included by the Contractor in the tender offer	SETI. Sanitary and Epidemic Control.
Exploitation	1. Proper use of the facility. Contractor provides the instruction of equipment exploitation.		Observing.	In accordance with chart	Because of national provisions and standards	At the expense of the recipient	AO
			Exploiting organization	Occasionally, according to service instructions			SETI, Sanitation and Epidemic Control

PART 5. CONSTRUCTION SITE MONITORING CHECKLIST

#	Checklist elements ESMP	Status (conformity)			Comments
		Yes	No	Not required	
	General requirements				
	Contractor checklist presence on the working place				
	Presence of the permissive environmental documents				
	Waste removal contract				
	Air pollution preventive measures				
	Roads watering;				
	Air quality monitoring				
	Coverage of the loose materials while transportation and keeping;				
	Delivery of packed cement to the construction site				
	Water resources pollution preventive measures				
	Sanitary cleaning of the construction site;				
	Obey the regime of water protection zones, channels;				
	Cleaning the territory off oil and fuel oil;				
	Creation of the car maintenance place.				
	Land resources pollution preventive measures				
	Ongoing activities to:				
	Cleaning the site off the construction waste;				
	Removal of solid-vegetation layer;				
	Collection of solid waste into special containers				
	Noise impact preventive measures				
	Is the monitoring of noise conducted?				
	Biological resources safety measures				

	Presence of permission to chop the trees				
Safety of personnel and population health					
	Are the passing and alternative driveway roads equipped?				
	Installation of warning signs in dangerous sites;				
	Are the safety measures conducted?				
	Presence of protection equipment, hygiene and first aid kit;				
	Conducting of all types of instructions;				
	Presence of access mode to working site;				

Part 6. Feedback and complaints review mechanism

For all questions regarding VIP-3, interested stakeholders can apply to ARIS Feedback System. Stakeholders have the following rights:

- The right to receive information
- The right to oppose inappropriate intervention by third parties
- The right to participate in tenders free from fraud and corruption

Any interested stakeholder (including villagers, contractors, project employees, authorities and other parties involved) may file a complaint if he/she considers that one or more of the above rights or any of the project principles or procedures have been violated.

Complaints are publicly disclosed, but the identity of the applicant remains confidential only if the person does not decide to disclose his identity. The identity of all applicants is protected by confidentiality.

COMPLAINTS REVIEW MECHANISM

Registration of Appeal. Appeals received in writing, verbally or electronically are recorded in the Feedback System journal, and then entered into ARIS Feedback System for analyzing and monitoring incoming correspondence containing the following information (depending on the type of application):

- Last name, name, patronymic;
- Postal address or phone number;
- Content of the appeal;
- Other background information

Applications may be submitted anonymously. If the appeal was received without any of the above data, it is recorded in the journal of incoming correspondence of the Feedback System, and the results of the appeal will be published in local media, on the ARIS website or made public at a village council session.

Implementation Control. Upon completion of the investigation, the beneficiary will be notified of the decision made by ARIS. If the citizen/beneficiary is not satisfied with the decision, he has the right to appeal. Instructions on how to appeal will be provided along with a response.

Appeal. The appeal is reviewed by ARIS Special Appeal Committee. ARIS Executive Director will set up an Appeal Committee consisting of project managers and department heads that will conduct the appeal hearing. After that, the citizen/beneficiary dissatisfied with the decision of the Committee has the right to appeal the decision in court.

Publication of Appeals. Once the appeal (statements, proposals, complaints, inquiries, positive feedback) is resolved, to encourage the use of the Feedback System, measures taken to resolve the complaint will be published by the local media. Upon request, the identity of the applicant will be kept confidential.

Feedback Channels. In the framework of VIP-3, the following communication channels were established through which residents/beneficiaries can send applications at different stages of the project:

. WhatsApp (instant text messaging system for mobile devices with voice and video support – Feedback System service numbers: + 996 550 700 522; +996 770 700 522);

- a. Facebook
- b. ARIS website: www.aris.kg
- c. Oral or written requests received during field meetings;
- d. ARIS Reception Office;
- e. E-mail: bfm@aris.kg.-

Part 7. Checklist of social monitoring/checking (screening) to evaluate the consequences of involuntary resettlement and social risks:

Micro project name: "Installation of the heating system in the kindergarten for 50 places

Oblast: Narvn

Rayon: Kochkor

Avil Aimak: Kum-Dobo

Avil: Kum-Dobo

#	Possibility of involuntary resettlement/social consequences (impact)	Yes	No	Unknown	Details
1.	1. Will the project activity include new physical construction works?	X			
2.	2. Will the project activity include renewal and rehabilitation of the existing physical objects?		X		
3.	3. Will the project activity cause the loss of housing, other actions or will cause irreparable damage to resources usage?		X		
4.	4. Is the site, reserved for this kind of work, free of encumbrances and is a social/state/village property?	X			Projecting construction site is a property of municipality. In accordance with a State act of the land plot.
5.	5. Is the project activity in this micro-project, will need to buy private land plot?		X		
6.	6. If the plot is a private property, is it possible to buy the land by agreed regulation? (desired buyer – desired seller)		X		Not required
7.	7. If the land plot was bought, what is it's square in fact and the status of the property?				Not required
8.	8. Are the owners of those land plots, ready to voluntary sacrifice required land plot for recent subproject/micro-project?				Not required
9.	9. Could the owners lose more than 10% of their land/construction as a result of their sacrifice, involved into subproject/micro-project?		X		
10.	10. Is there a square for materials mobilization or transport for construction works in the frames of existing land site / diversion way?	X			
11.	11. Are there a people, who did not formalize the right of ownership, but live/doing business on the suggested site/sites of projects implementation, which are used for construction works?		X		
12.	12. Possibility of any temporary impact?		X		
13.	13. Is there a chance to resettle, to close the activity in the spheres of business/commerce or peoples activity in livelihoods during the construction?		X		
14.	14. Is there a physical resettlement of the people cause of construction?		X		
15.	15. Will this project include the resettlement of any persons? If yes, please describe in details.		X		
16.	16. Is there a loss/damage to agricultural lands, not collected crops, trees?		X		
17.	17. Will there be a loss of income or livelihoods?		X		
18.	18. Will the people lose the access to objects, services or natural resources for good or temporary?		X		
19.	19. Will the project cause the loss of the job/working positions?		X		
20.	20. Will project contribute/lead to excessive inflow of working power as a result of new constructions?		X		
21.	21. Will the construction works require additional/qualified working power behind the borders of settlement?	X			

22.	22. Will the construction works cause the destruction/violate the life activity of the host community?		X		
23.	23. Will the construction of a new buildings, drainage lines cause any destruction of neighbor houses, wells, lands?		X		
24.	24. Will this intervention cause any intergroup or intragroup stresses/conflicts?		X		Foreign contractors will not be hired for the construction of this object.
25.	25. Are there any vulnerable groups (including the local people, inhabiting the proposed places or concerned by intervention due to project implementation)?		X		
	<p>Total assessment and proposed mitigation measures, if there are:</p> <p>In given Micro-project WB OP - 4.12 «Involuntary resettlement» not required. The risk of social impact during the micro-project implementation is minimal.</p>				

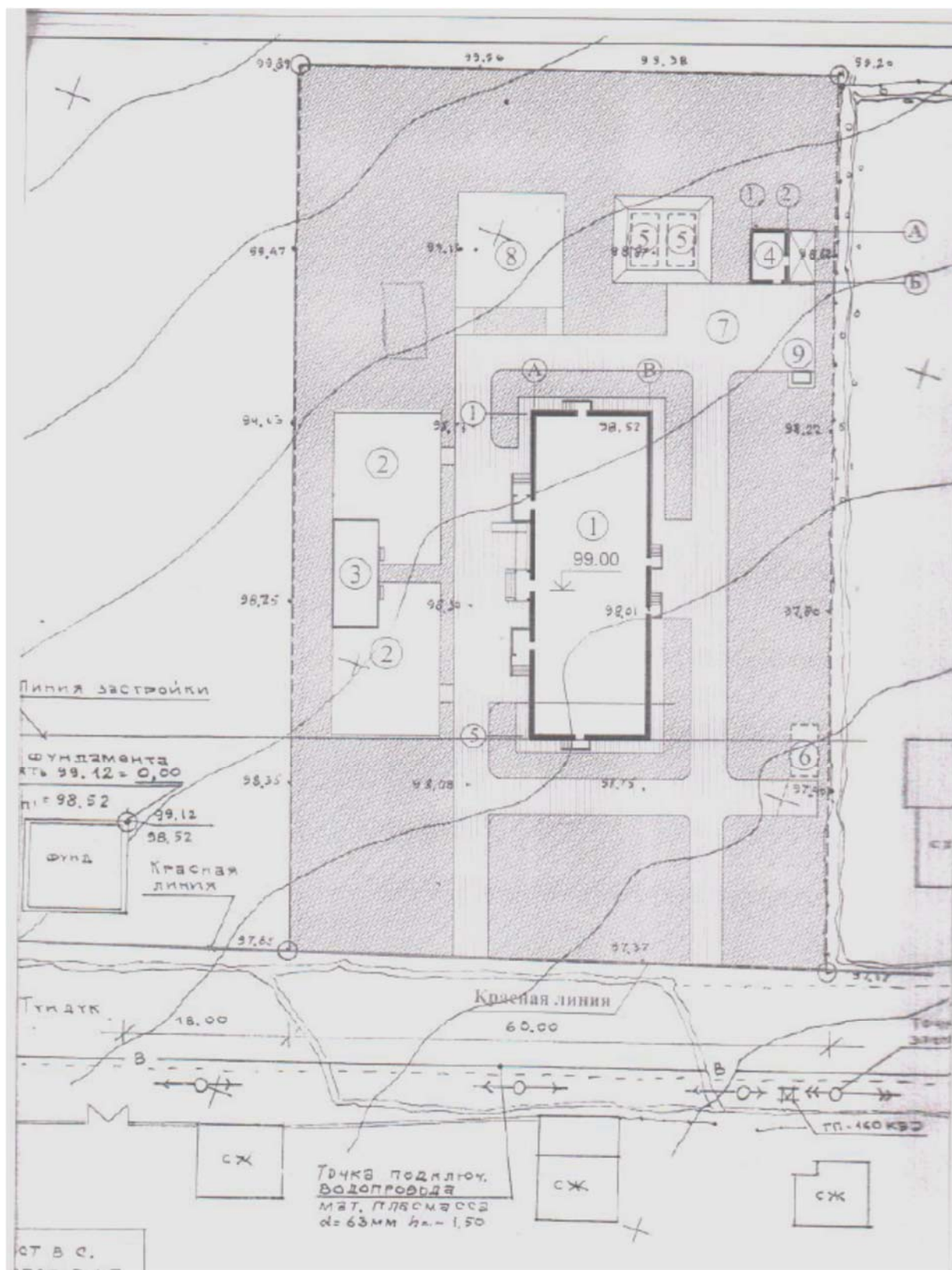
Annex 1. Kindergarten location draft.



Annex 2. Image of the constructing kindergarten






Annex 3. General plan of the kindergarten



Экспликация зданий и сооружений

	Наименование	Примечание
1	Детский сад на 50 мест	
2	Игровые площадки	
3	Теневой навес на 2 группы	
4	Котельная с навесом для угля	
5	Противопожарные резервуары	
6	Выгреб на 50 м ³	
7	Хозяйственная площадка	
8	Спортивная площадка	
9	Туалет на 2 очка	

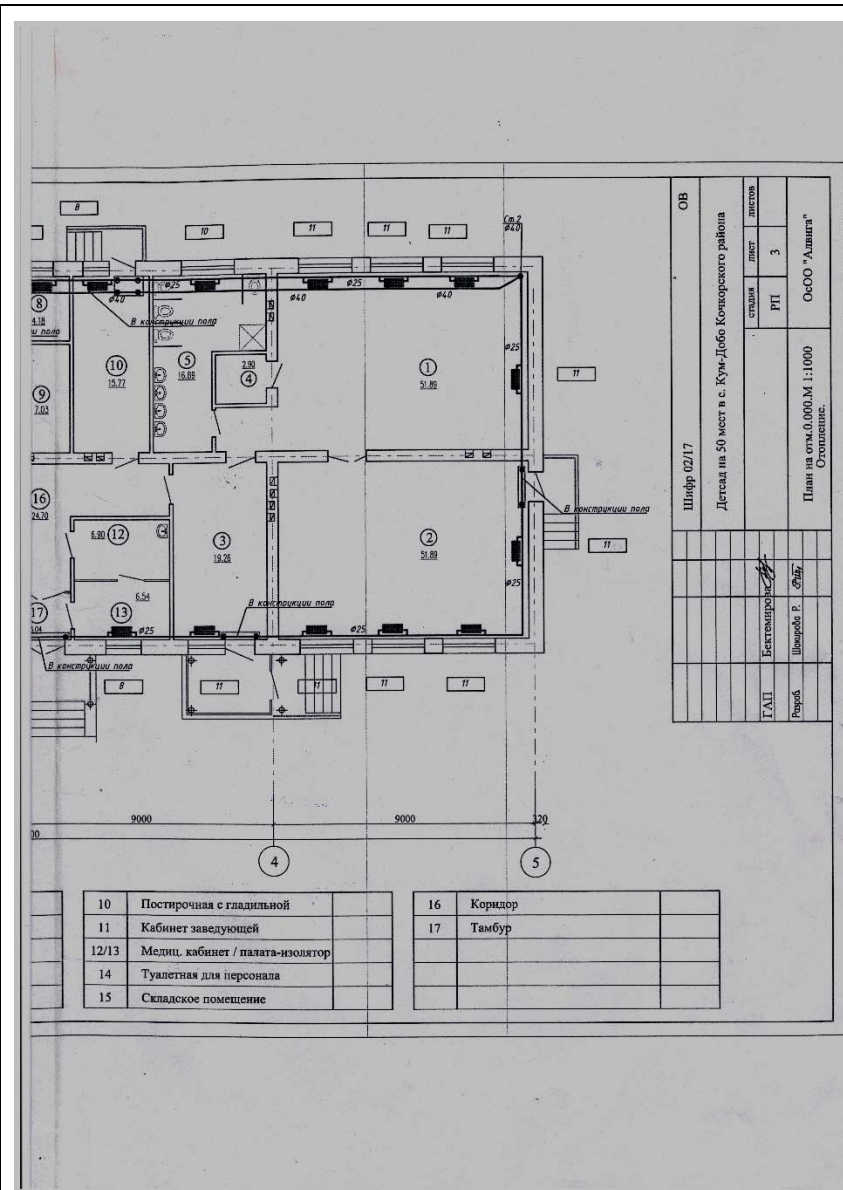
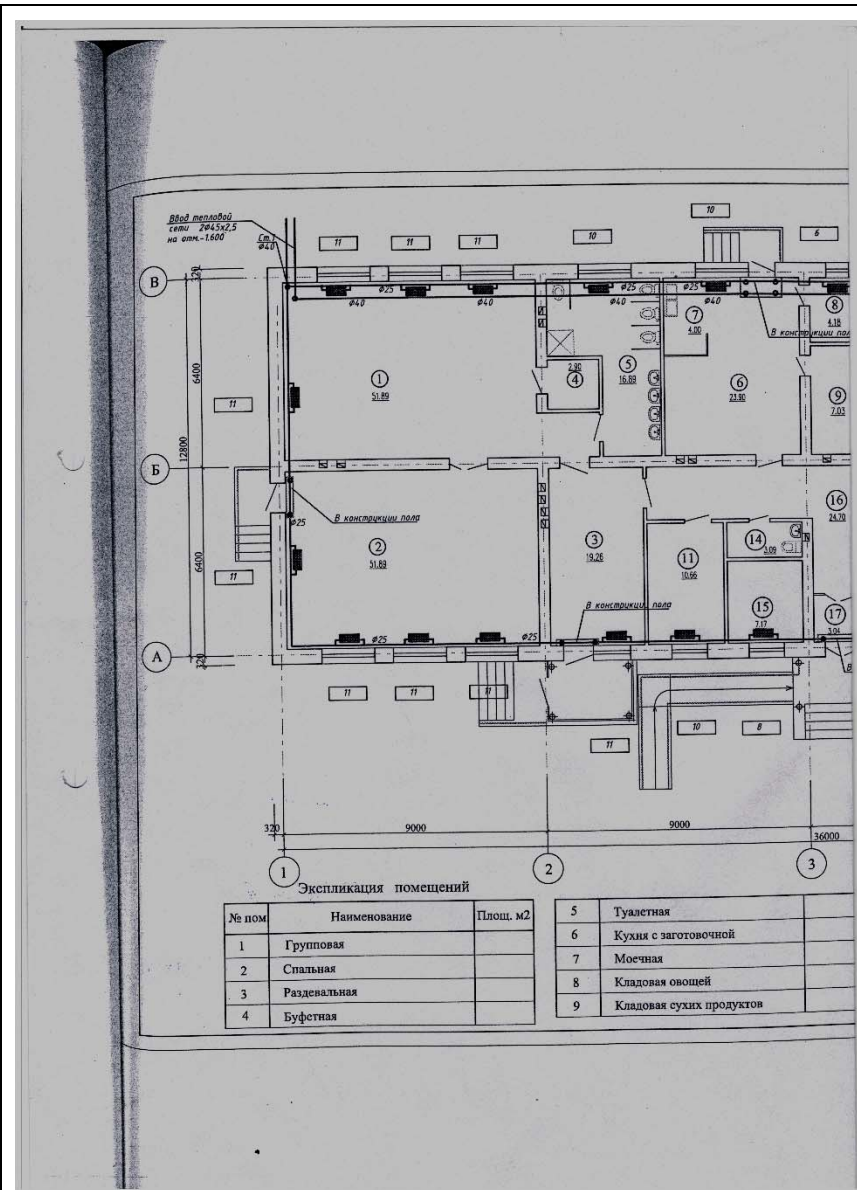
Условные обозначения:

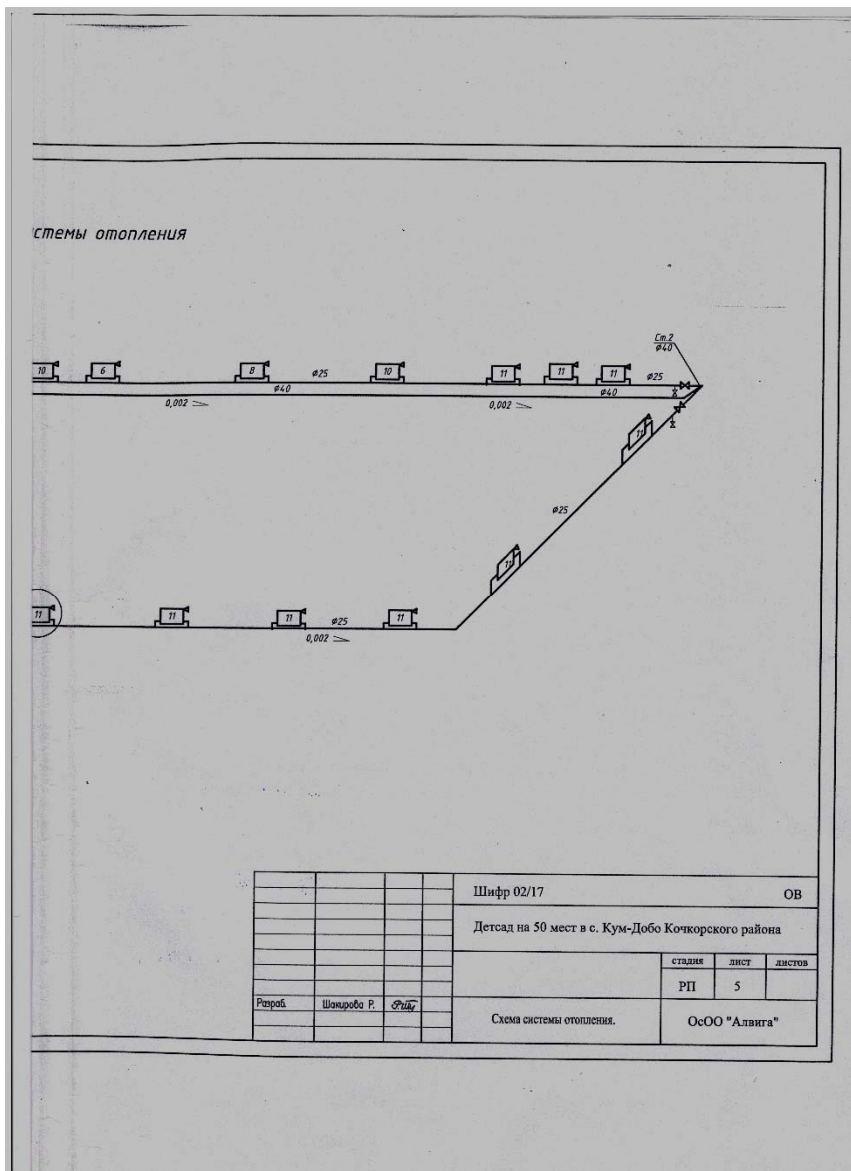
	Покрытия
	Озеленение
	Граница территории

Примечание:

- Данный генплан разработан на основании плана топосъемки в М 1:500

Annex 4. Heating draft of the kindergarten in Kum-Debe village





Annex 5. Certificate of Compliance for heating boiler.

ТАМОЖЕННЫЙ СОЮЗ

СЕРТИФИКАТ СООТВЕТСТВИЯ

№ ЕАЭС KG 417/019.KG.02.00478

Серия KG № 0017265

ОРГАН ПО СЕРТИФИКАЦИИ
Бишкекский Центр испытаний, сертификации и метрологии ЦСМ при Министерстве экономики Кыргызской Республики, адрес 720040, г. Бишкек, ул. Панфилова 197, тел. +996 (312)66-19-70, bicism@mail.ru, аттестат № KG 417/КЦА.ОСПиУ.019 выдан 31.03.2017 г. Кыргызским центром аккредитации при Министерстве экономики Кыргызской Республики.

ЗАЯВИТЕЛЬ
ЧП Бикиев Болот Дюшембиевич, Кыргызская Республика, свидетельство о государственной регистрации № Патент ПД 0705390, зарегистрировано УГНС по Ленинскому району г. Бишкек, место нахождения: 720000, г. Бишкек, н/с. Колмо, Жеткинчек-27, адрес места осуществления деятельности: 720000, г. Бишкек, ул. Интергельпо, 1/2, телефон +996555353831, ИНН 20504198300193

ИЗГОТОВИТЕЛЬ ЧП Бикиев Болот Дюшембиевич, адрес изготовителя: Кыргызская Республика, г. Бишкек, ул. Интергельпо, 1/2

ПРОДУКЦИЯ Котлы отопительные водогрейные твердотопливные марки «Термолюкс» теплопроизводительностью до 100 кВт, Серийный выпуск

КОД ТН ВЭД ЕАЭС 8403109000

СООТВЕТСТВУЕТ ТРЕБОВАНИЯМ
ТР ТС 010/2011 "О безопасности машин и оборудования"

СЕРТИФИКАТ ВЫДАН НА ОСНОВАНИИ
протокола испытаний №2 от 21.01.2019г. лаборатории испытаний ПМК и мебели БЦИСМ № KG417/КЦА.ИЛ.023 от 10.01.2018г., паспорта на пробу и протокола анализа проб промвыбросов №243 от 14.09.2018г. отдела экологического мониторинга Чуй-Бишкекского территориального управления государственного агентства охраны окружающей среды и лесного хозяйства при Правительстве КР, акта ОС БЦИСМ №101-412 от 28.01.2019г. Схема 1с.

ДОПОЛНИТЕЛЬНАЯ ИНФОРМАЦИЯ
ГОСТ 20548-93 Котлы отопительные водогрейные теплопроизводительностью до 100 кВт. Срок службы, срок и условия хранения указаны в эксплуатационной документации, приложенной к изделию.

СРОК ДЕЙСТВИЯ с 29.01.2019 г. по 28.01.2024 г. ВКЛЮЧИТЕЛЬНО

Руководитель органа по сертификации
Эксперт





подпись



подпись

Соороноев Эркин Керимбаевич
инициалы, фамилия

Муканова Анар Аалиевна
инициалы, фамилия

Annex 6. Construction site Banner sample

ОБРАЗЕЦ ИНФОРМАЦИОННОГО БАННЕРА

1000мм

THE WORLD BANK

**Агентство развития и инвестирования сообществ
Кыргызской Республики
Проект сельских инвестиций -3**

Наименование подпроекта/ микропроекта: «_____»

Заказчик: **Айыльный аймак**

Подрядчик:

Начало строительства : «_____» 2019 г. Окончание строительства: «_____» 20__ г.

По всем вопросам о ходе реализации Проекта обращаться по следующим тел. МОС АРИС:
+ 996 (770) 700-522 (WhatsApp), + 996 (550) 700-522 (моб.)
Ответственный за реализацию:

500 мм